

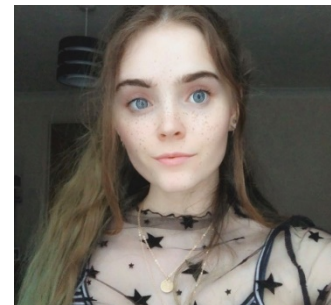
SU MANIFESTO FORM 2020/21

Position: Welfare Officers

Name: Moe Bethany & Isabelle Kirkham

Course & Year: Second year BA CPP:
DATE

Emails: mollie.hancock@c SSD.ac.uk &
isabelle.kirkham@c SSD.ac.uk



Our 5 Key Aims

1: Mental health and wellbeing support. Compile an easy to use directory of wellbeing support services that students can use to find internal and external support that suits them. Create awareness and encourage students to take advantage of the numerous support services available such as student counselling, disability and dyslexia, BAME support etc.

2: A starting university guide, including subjects such as; housing (dealing with dodgy landlords), nights out, jobs, money, student finance. Work alongside SAS, but making it more student based, and from the student point of view.

3: Having an area of support for care experienced/without home support students within the uni. Having care experienced voices heard within the school.

4: Partner with all Course Year representatives in tackling any challenge that will otherwise affect the academic interests and welfare of students.

5: Building up a system in order for students to be able to express concerns about literally anything, which can be anonymous.

Hi! We are Moe and Isabelle. We are a pair of second year DATE students who are incredibly passionate about making the student experience at Central one that is not only positive but also safe for everyone. We want to closely work alongside other officers and SAS to create an environment at central that is inclusive of all minorities and identities. We aim to do more than simply give support but to create a change within the institution, led by us students.

Moe: I have experience with mental health and the support system surrounding it. This has caused me to be very passionate about destroying the stigma surrounding mental health and getting help for it, and also to improve the help that is in place so it's more accessible, inclusive and better for everyone who needs it. Having been studying at central for two years now, I have become aware of many things within Central that need to be talked about and improved.

Isabelle: From growing up in care, I have experience of the social care system which has caused me to be very passionate about speaking up when something doesn't seem right. I have worked on multiple campaigns for care experienced charities who's aims are to bring unheard voices to the forefront. I am keen on having a care experienced voice on the Student Union as we are often excluded from environments such as universities, and having a care experienced voice on the SU means that we can finally be represented.

Our 5 key aims are only the tip of the iceberg. The level of support and change we want to bring is something much larger. Currently, it's not easy for students to navigate which support systems are available, we want to make it easier for students to find the help that they need. To consistently and relentlessly represent the views and interests of all students especially as it concerns their education and welfare.

We can't pretend that we will always understand what anyone is going through, however we promise to always be here to listen and help as best we can, giving you the support you need.